



**BURG
WÄCHTER**

TRSE 10



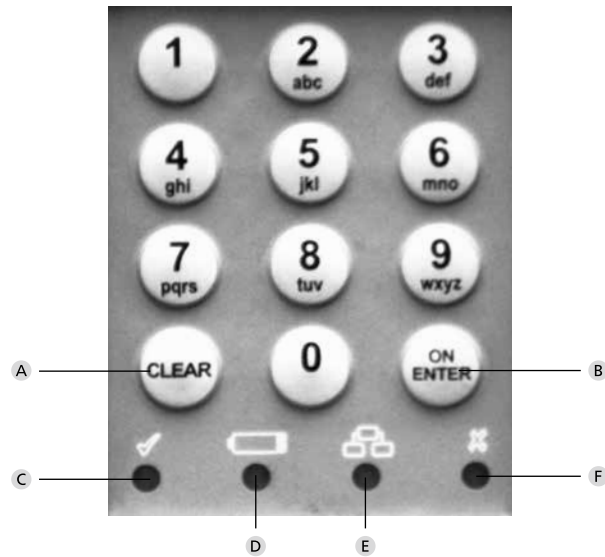
en Operating Instructions

BURG-WÄCHTER KG
Altenhofer Weg 15
58300 Wetter
Germany

BA TRSE 10 05/2017

www.burg.biz

Structure



Figure

- A Clear button**
Quitting the programming mode
- B On / Enter button**
- C Readiness for opening**
LED goes on when a valid opening code is entered and programming is successful.
- D Battery replacement symbol**
When this LED is on, please replace **all 3** batteries (LR6 / AA / 1.5V / Alkaline).
- E Readiness for entry / programming**
The LED goes on when the programming mode is entered. It goes off when the programming mode is exited again.
- F Rejected entry / blocking time**
The LED goes on when an invalid code is entered or when the programming is incorrect. In case a wrong code is entered three times in a row, the lock is blocked for 5 minutes. During this time, the LED flashes. In this status, opening is not possible, even with a correct opening code.

Dear customer,

Thank you for deciding for a safe with the BURG-WÄCHTER TRSE10 electronics. This electronics is certified according to VdS class 1 and opening is possible both with fingerprint and using a Pincode. You have thus acquired a product meeting extremely high security requirements and developed and manufactured using the latest technical potential.

Important: Please read the entire User Manual before programming and store this User Manual at a safe place for future reference at any time you may need it.

We hope you will enjoy your BURG-WÄCHTER safe.

Your BURG-WÄCHTER KG

Important information about our electronic locks

General information: please take care that the codes and the code carrier do not fall into the wrong hands. Therefore, store the codes and code carrier at a safe location so that these can only be accessed by authorised persons. In case you loose a code or code carrier, the lock must be converted to a new code / code carrier, or replaced.

- The factory code must be changed as soon as the lock is commissioned.
- Simple codes that are easy to guess (e.g. 1, 2, 3, 4, 5, 6) must not be used.
- Personal data (e.g. birthday) or other data that may be concluded with knowledge of the code owner must not be used as code.
- After changing the code, the lock must be checked several times with the safety door opened.

Generally

A Pincode and 10 memory slots for fingerprints are available for opening.

Pincode: 123456 (factory setting)

The Pincode has always 6 digits.

For fingerprint opening, **two** different fingers need to be used, which have to be dragged over the sensor successively.

When an action has been successfully completed, the green LED goes on.

Technical data

Number of Pincodes	1
Number of fingerprints	10
Blocking times	When a wrong code is entered 3 times, 5 minutes, subsequently 10 minutes after each wrong entry
Power supply	3 x MIGNON LR6 / AA / ALKALINE
Permissible ambient conditions	-15 °C through +50 °C Up to 95 % rel. air humidity (non condensing)

Menu structure

The individual labels on the keypad indicate numerals and letters. Combinations of numerals and / or letters are used to program the individual functions. The initial letters of a programming procedure are composed as a combination of numbers (to facilitate their remembering). When using these explicit combinations, the individual submenus are opened.

Opening with Pincode

- Press „On / Enter“, the yellow LED of the Readiness for entry / programming icon goes on.
- Enter the Pincode. The green LED goes on when entered correctly, the red one when the entry is rejected.

Turn the rotary handle clockwise to open the door.

Opening with finger

- Press „On / Enter“, the yellow LED of the Readiness for entry / programming icon goes on.
- Move your 1st finger over the sensor.
The yellow LED goes off, the green LED goes briefly on when the finger is accepted, then the yellow LED goes on again.
- Move your 2nd finger over the sensor.
The yellow LED goes off, the green LED goes briefly on when the finger is accepted.

Turn the rotary handle clockwise in order to open the door.

Access to the programming mode to change the lock settings

- Press „On / Enter“, the yellow LED of the Readiness for entry / programming icon goes on.
- Type numbers 76 (**program mode**), the yellow LED goes off.
- Press „On / Enter“ and enter the valid Pincode.

When a valid Pincode has been entered, the green LED goes on briefly, subsequently the yellow LED flashes. As long as the yellow „Readiness for entry / programming“ LED is flashing, you are in the programming mode and so you can perform various actions.

Actions in programming mode

Changing Pincode

- Type numbers 22 (**change code**), then press „On/Enter“.
 - Type your new code (6 digits) and confirm with „On/Enter“.
 - Enter your new code again and confirm with „On/Enter“.
- The yellow LED flashes during the whole process.
The green LED flashes in case of a successful change.

Leave the programming mode by pressing the „Clear“ button twice.

Saving fingers

- Type numbers 23 (**add finger**), then press „On/Enter“. The yellow LED is on.
 - Move your finger over the sensor several times. During this, the yellow LED goes off whenever you have moved your finger over the sensor, until the green „Readiness for entry/programming“ LED goes on briefly. The yellow LED is flashing, as you are still in the programming mode.
- Leave the programming mode by pressing the „Clear“ button twice or proceed with saving an additional finger.

Having saved a finger, you can directly continue by saving additional fingers. When the yellow LED flashes:

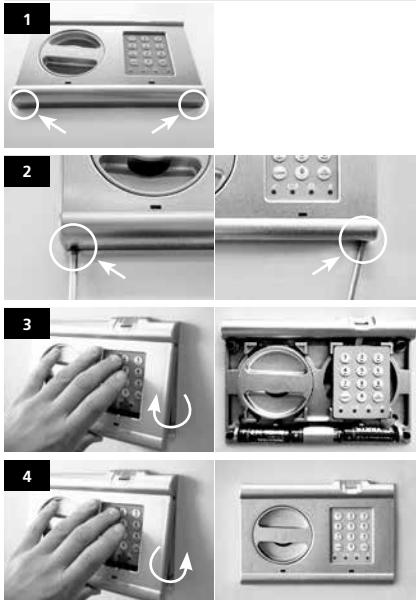
- Type numbers 23, then press „On/Enter“. The yellow LED is on.
 - Move another finger over the sensor following the above indicated instructions.
- Leave the programming mode by pressing the „Clear“ button twice.

Deleting all fingers

- Type numbers 33 (**delete finger**), then press „On/Enter“.
- The green LED flashes in case of a successful action.
The yellow LED flashes during the whole process.

Leave the programming mode by pressing the „Clear“ button twice.

Replacement of batteries



Batteries: 3x 1,5V Mignon (LR6)

Disposal of batteries

Dear Customer,

Please help us avoid unnecessary waste. Should you intend to dispose of this device at any time, please remember that many components of this device contain valuable materials, which can be recycled. Please do not throw out the device as general waste, but rather obtain information on the collecting points for electrical waste from the responsible authority of your municipality.



The dustbin means:

Empty batteries or accumulators may not be disposed of in household waste. Please carry your batteries/accumulators to an appropriate shop or to a recycling yard of your municipality. Such return is free of charge and legally imposed.



If you have any questions concerning the EC declaration of conformity, please use info@burg.biz

Errors and changes reserved.