

## SECURITY SAFES & CABINETS

Built to the highest manufacturing standards, our Security Safes are designed to protect a wealth of valuable items within a range of environments.

### MINI VAULT S2 SILVER 0 ELECTRONIC

- £4,000 overnight cash cover (£40,000 valuables)
- Independently tested and certified to EN14450 S2
- 4mm Solid steel electrically welded body
- 8mm anti-bludgeon door fitted with advanced electronic lock
- Registration system to prevent lockout situation
- Chrome plated bolt cups
- Soft foam insert protects valuables from damage
- Fully lined interior
- Motion sensitive Interior light included
- Suitable for rear or floor fixing - Bolts supplied
- Batteries, Installation and operating instructions included
- Colour - Metallic Dark Grey RAL7001

SKU: SFMV-0ZE-S-S2



ADDITIONAL INFORMATION

Weight	23.000 kg
Dimensions	250 (H) x 374 (W) x 274 (D) mm
Standard	Silver
Cash Rating	£4,000
Volume	18 litres
Internal Depth	210mm
Internal Width	354mm
Internal Height	240mm

MINI VAULT S2 SILVER 0 ELECTRONIC IMAGES



AiS Approved



Secured By Design



Mini Vault Chrome Bolt Cup



Motion Activated Magnetic Light

MINI VAULT S2 SILVER 0 ELECTRONIC IMAGES



Mini Vault Bolts & Handle



Mini Vault 0 S2

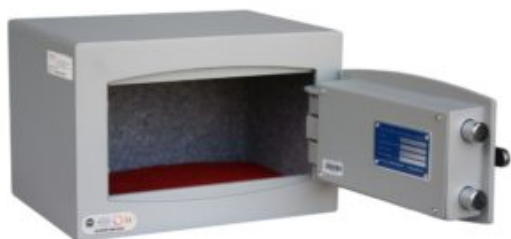


Mini Vault 0 S2 Silver Electronic Locking



Mini Vault 0 S2 Silver Electronic Locking

MINI VAULT S2 SILVER 0 ELECTRONIC IMAGES



Mini Vault 0 S2 Silver Electronic Locking

Your Securikey Stockist

Every effort has been made to ensure that the information in this brochure is correct. We have a policy of continually developing and improving our products and reserve the right to change specification without notice. By virtue of the Trades Description Act 1968 all measurements and weights must be considered approximate.

