

## INSTRUCTION MANUAL

### FOR Vega / Euro-Lite / Guardian S1 & S2 SAFE

#### **TO OPEN SAFE:**

1. Open the lock by inserting the key and Turning it in a clockwise direction
2. If Mechanical or Electronic Combination Lock is fitted, open it according to the supplied instruction sheet along with safe.
3. Hold the key / comb lock knob & pull to open the door.

#### **NOTE FOR DISPOSAL**

**Material used in safe can be recycled after disposal of safe in normal ways and do not create any adverse effect on environment in normal use or if disposed.**

#### **ROUTINE MAINTENANCE**

#### **TO CLOSE SAFE:**

1. With the door bolts fully withdrawn, push the door until it is closed against the body step.
2. Close the lock by turning the key fully in an anti-clockwise direction. Withdraw the key. If the Combination Lock is fitted close the lock according to the instructions given in manual.

#### **1. KEY LOCKS**

These should occasionally be serviced. (Refer Lock Manual) We would recommend that this be carried out only by authorized technician or a competent locksmith.

**Note:-No Duplicate keys are available.**

#### **CHANGING THE COMBINATION**

To obtain access to the lock for changing the combination, open the safe door.

The Comb-lock Change key can be inserted through the hole on door cover plate and new combination can be set according to the instruction supplied.(Refer lock Manual)

Check the set combination in Door open position, several times and then close the door.

In key lock, changing the setting for New key can also be done (If key lock is changeable) as per instructions supplied.(Refer Key lock Manual)

(Check the availability of lock vis a vis certification).

#### **2. COMBINATION LOCKS**

These should be serviced occasionally according to the attached instruction. (Refer Lock Manual) We would recommend that this be carried out only by authorized technician or a competent locksmith

#### **3. TO PUT SAFE INTO USE AND VALIDITY OF CERTIFICATION.**

**The safe must be anchored with two bolts as per obligatory requirement of the EN:14450, either to the floor base or to the wall. (Refer instruction sheet for anchoring)**

**"If the safe is not anchored as per instructions or damaged by fire or attempted break-in or intrusion attempt or for any incorrect use / function as well any modification in the safe, the certification label becomes invalid."**

#### **SERIAL NUMBERS**

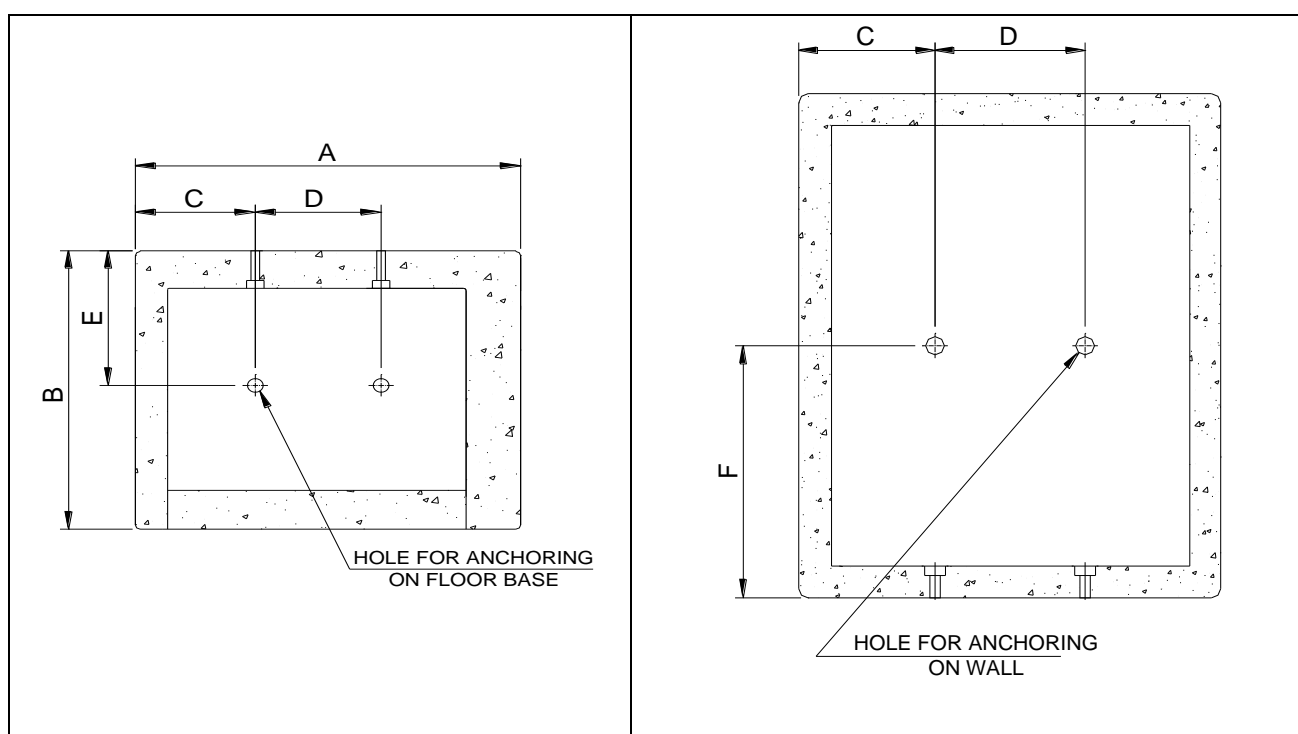
**The customer is advised to note the details of the certificate and serial number before putting the safe into use.**

## CONCRETE FLOOR BASE / WALL FIXING DETAILS FOR SAFES

Model No.	A	B	C	D	E	F
<b>FS-10</b>	325	325	83	160	170	138
<b>FS-40</b>	450	380	145	160	200	165
<b>FS-50</b>	360	400	120	120	200	215
<b>FS-45</b>	490	410	151	160	200	235
<b>FS-65</b>	490	410	151	160	200	330
<b>FS-85</b>	490	410	151	160	200	430

### All dimensions are in mm

Pls refer the product catalogue offered by the Authorised Distributor for certification available for specific models in your region.



**SECTIONAL PLAN**

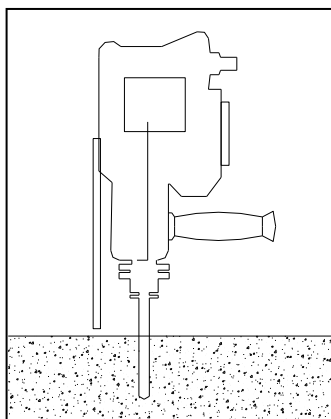
**SECTIONAL ELEVATION**

POSITION OF HOLE FOR ANCHORING  
THE SAFE TO FLOOR BASE

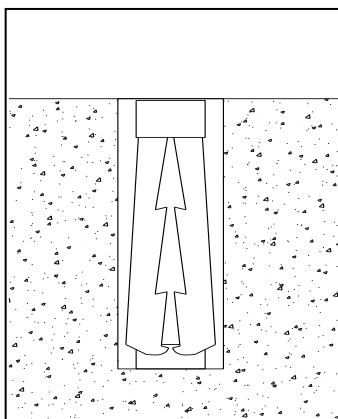
POSITION OF HOLE FOR ANCHORING  
THE SAFE TO THE WALL.

**1. Mark the position for a Hole on the floor Refer (C, D & E) or back Side Refer (C, D & F) as per required Model of the safe that is to be anchored.**

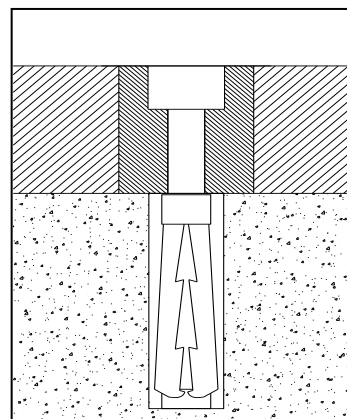
**Important Note: - Use only Concrete of Minimum M30 grade of Compressive strength up to 30 MPa (4,350 psi)**



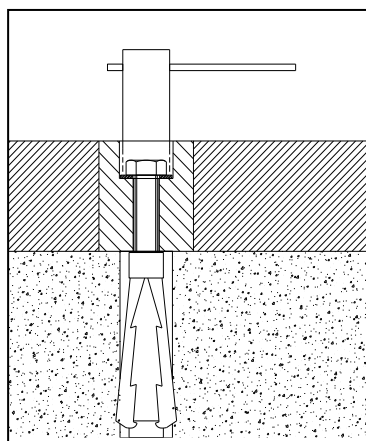
2. Drill Two Holes with Rotary Hammer Drill (Recommended max. drill  $\varnothing$  14mm , to depth 45 mm



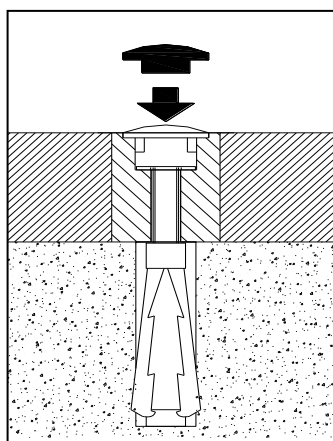
3. Remove the dust to clean the drilled holes & Place an Anchor socket (without Bolt) in the holes.



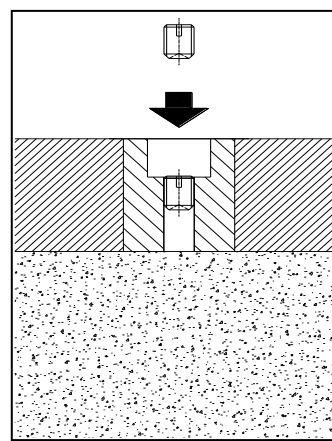
4. Place the safe and align the hole / Socket with Anchor bush center.



5. Put the Anchor Bolt with washer and tighten down until firm. (Recommended to use Torque wrench set with 10 N-m torque)



6. Place and Press fit the plastic plug on all four holes to cover the bolt head & bush hole.



7. Put the grub screw in unused holes to plug it. Also Place & Press fit plastic plug to cover bush hole.

**Authorised Dealer:**